

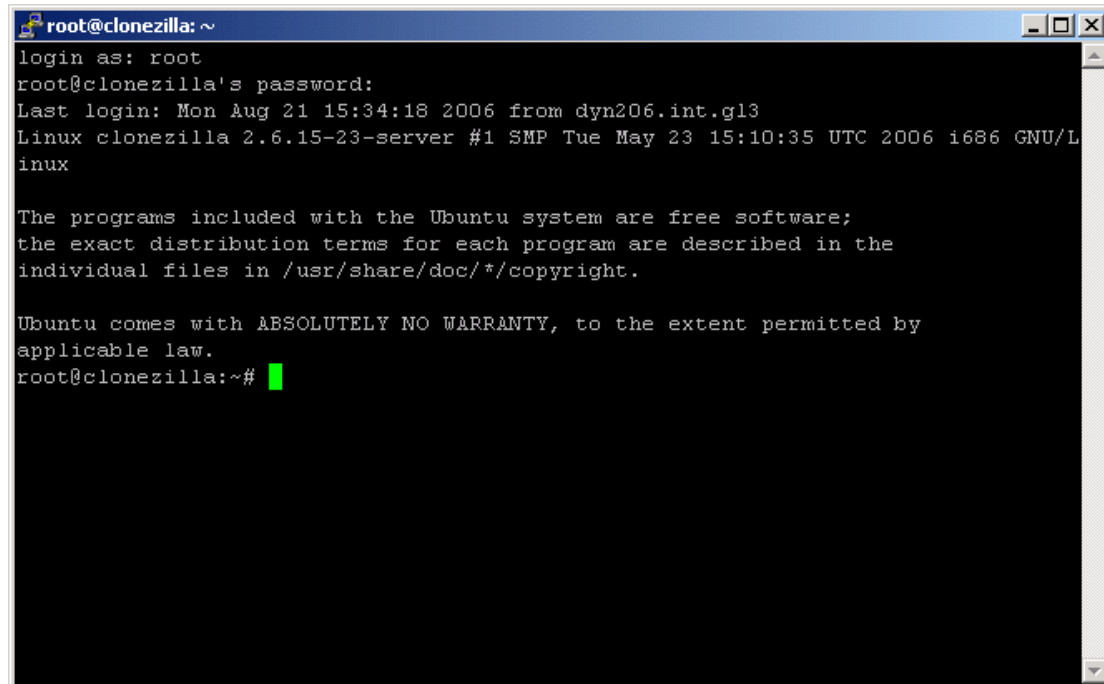
This doc is provided by raymond.siudak_at_int_dot_greenpeace_dot_org
Thanks to Raymond.

Imaging/restoring machine's with clonezilla

Start an SSH (Putty) and connect to clonezilla server.

Login name : root

Password : XXXXXX

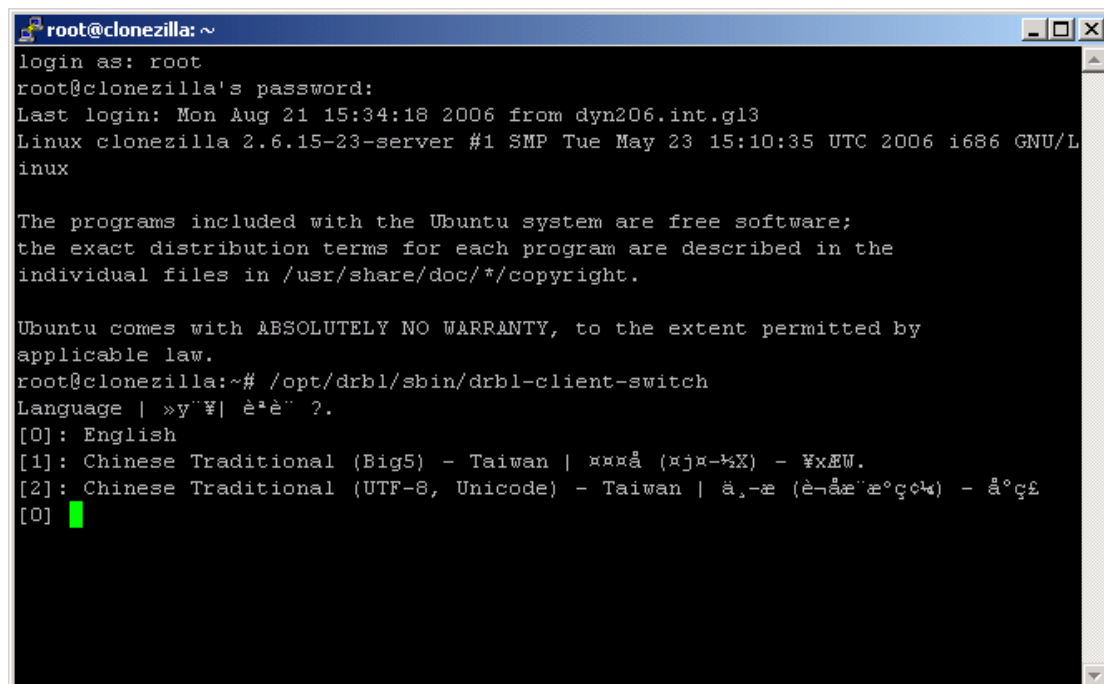


```
root@clonezilla: ~
login as: root
root@clonezilla's password:
Last login: Mon Aug 21 15:34:18 2006 from dyn206.int.g13
Linux clonezilla 2.6.15-23-server #1 SMP Tue May 23 15:10:35 UTC 2006 i686 GNU/L
inux

The programs included with the Ubuntu system are free software;
the exact distribution terms for each program are described in the
individual files in /usr/share/doc/*/copyright.

Ubuntu comes with ABSOLUTELY NO WARRANTY, to the extent permitted by
applicable law.
root@clonezilla:~#
```

Execute the command : `/opt/drbl/sbin/drbl-client-switch` (or `/opt/drbl/sbin/dcs`)
Type 0 for English

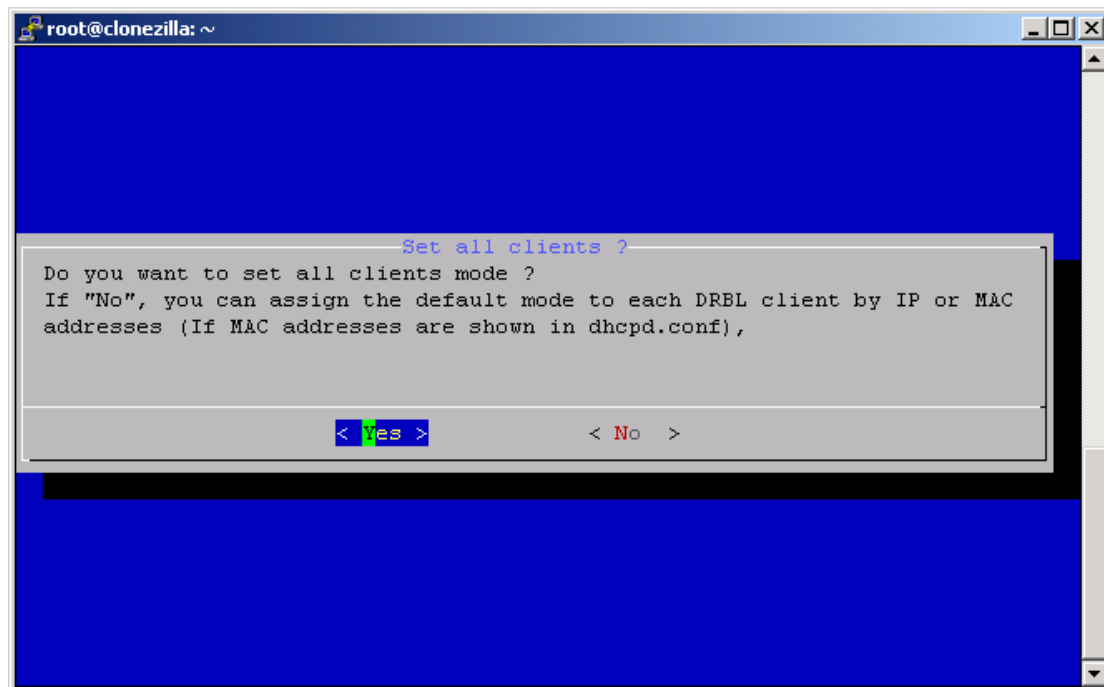


```
root@clonezilla: ~
login as: root
root@clonezilla's password:
Last login: Mon Aug 21 15:34:18 2006 from dyn206.int.g13
Linux clonezilla 2.6.15-23-server #1 SMP Tue May 23 15:10:35 UTC 2006 i686 GNU/L
inux

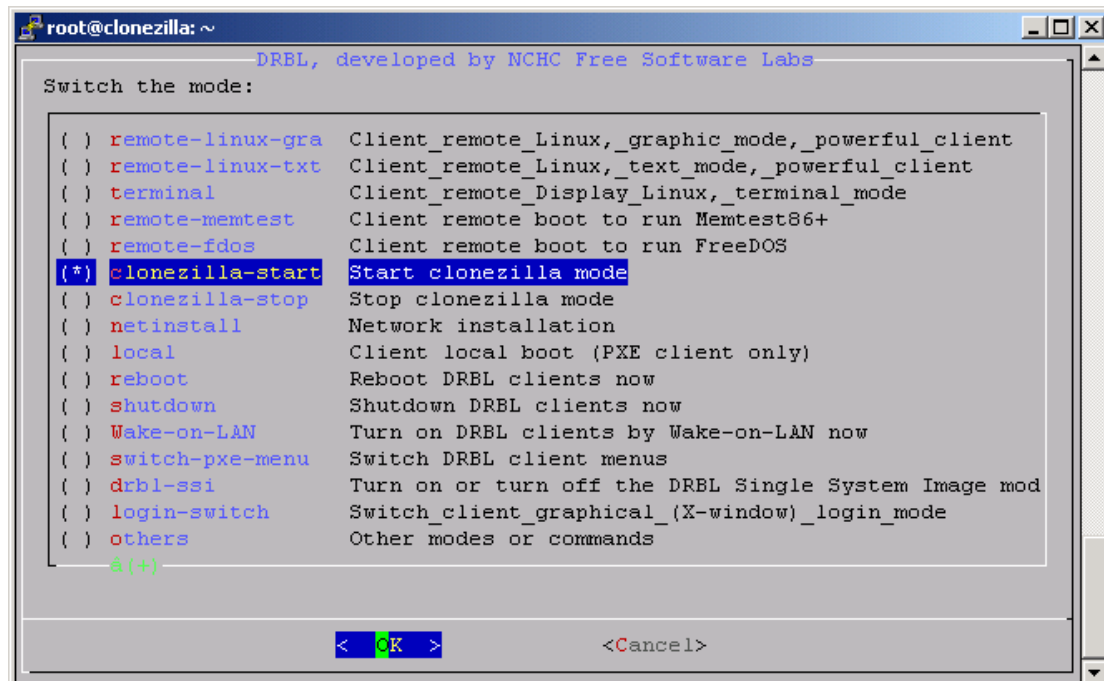
The programs included with the Ubuntu system are free software;
the exact distribution terms for each program are described in the
individual files in /usr/share/doc/*/copyright.

Ubuntu comes with ABSOLUTELY NO WARRANTY, to the extent permitted by
applicable law.
root@clonezilla:~# /opt/drbl/sbin/drbl-client-switch
Language | »y`¥| è*è` ?.
[0]: English
[1]: Chinese Traditional (Big5) - Taiwan | ㄎㄛㄛㄤ (ㄎㄓㄨㄣˋㄒㄩㄥˊ) - ㄉㄠˊㄉㄠˊ.
[2]: Chinese Traditional (UTF-8, Unicode) - Taiwan | ㄎㄛˊ,ㄠˊ (ㄝˊ-ㄛˊㄠˊㄠˊㄠˊ) - ㄛˊㄠˊ
[0]
```

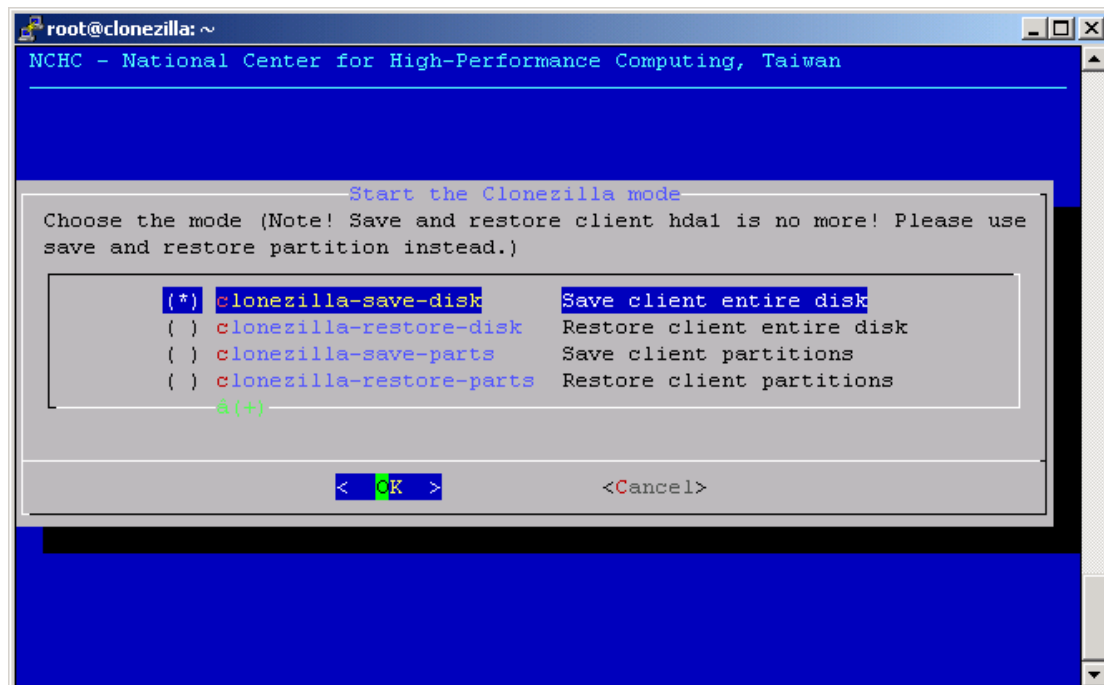
Select Yes



Check clonezilla-start and press Ok



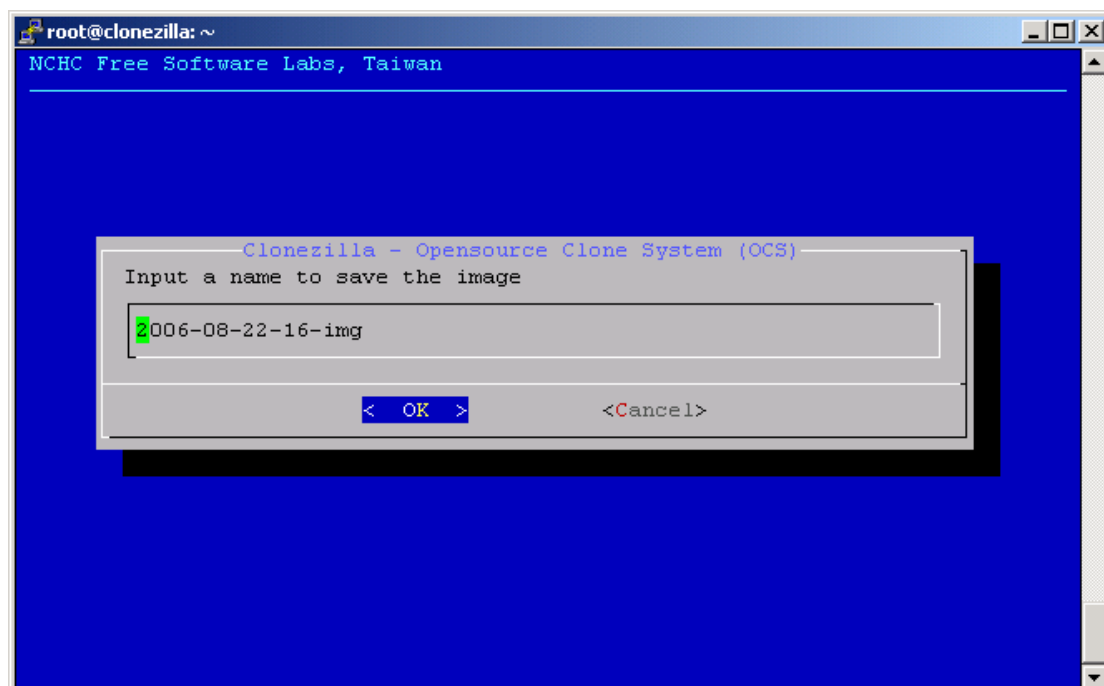
In this screen you can choose to ; save a disk/partition or restore disk/partition.
In this example choose *clonezilla-save-disk*



You can choose an image name now or later on the client machine (it's better to choose it now so the rest of the upload will go unattended)

Loading to server

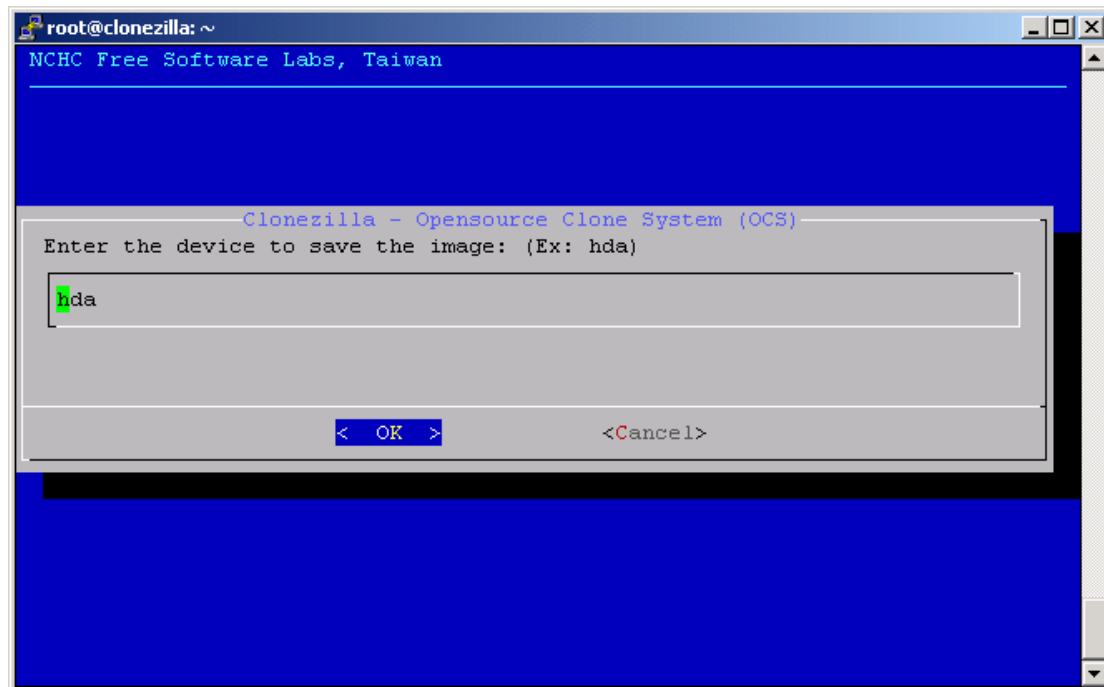
Choose your image name and press Ok.



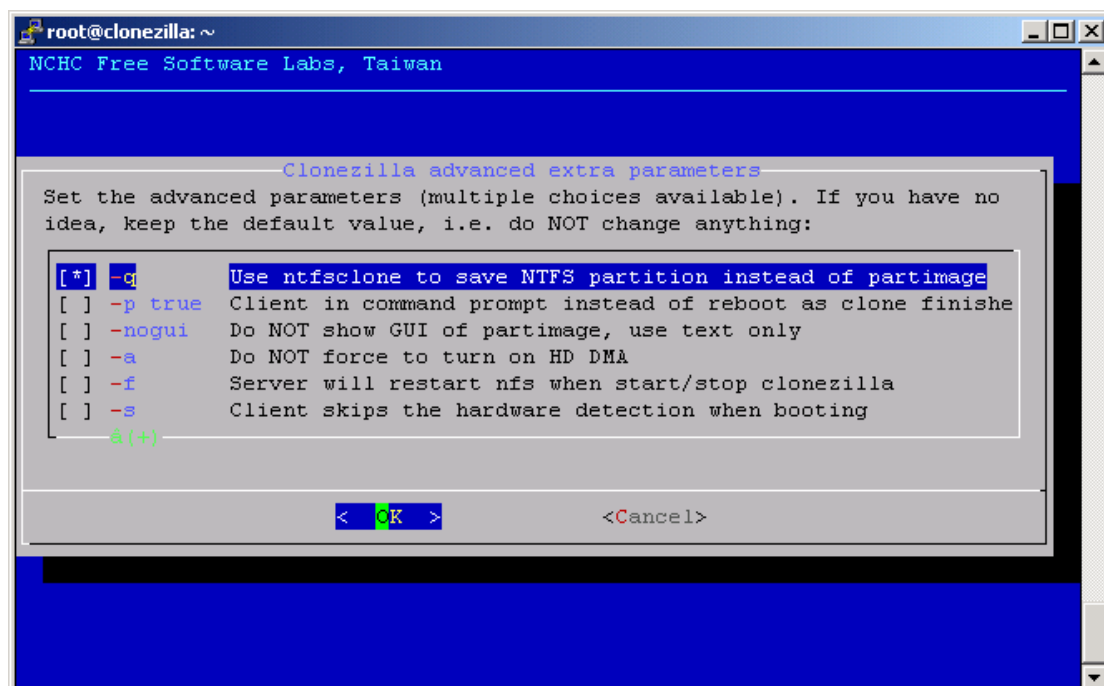
Just press ok here.

Note : Some newer machines will give an error when trying to upload the image, it's caused by Serial ATA disks. When this happens replace "hda with sda".

Press Ok.



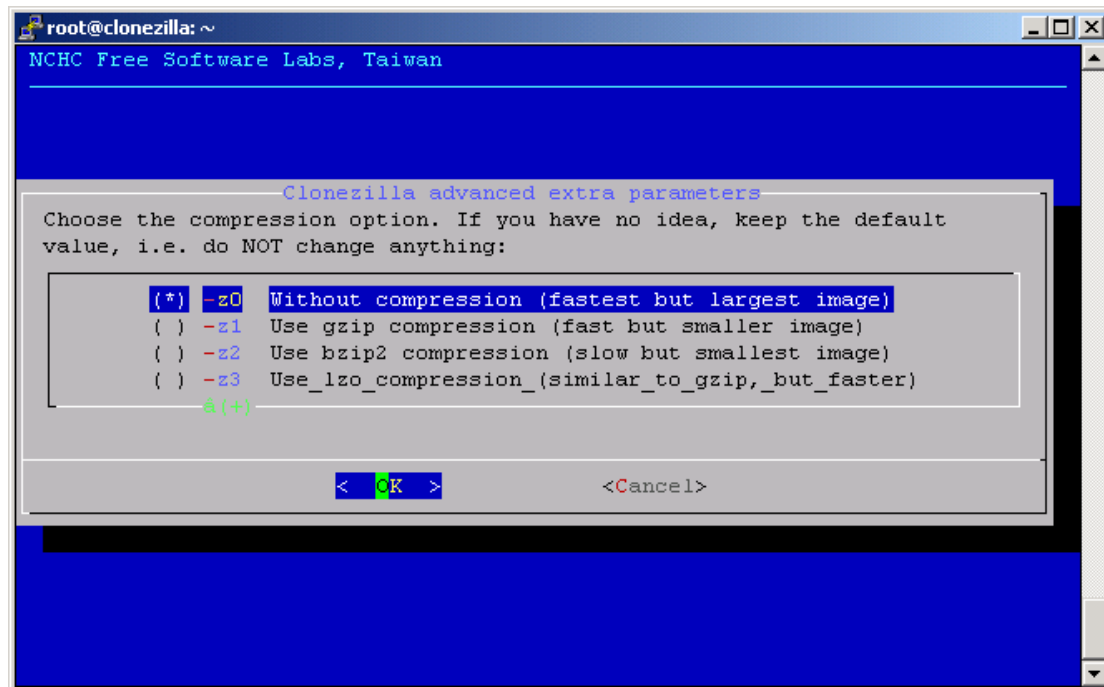
Check Use NTFS-clone and press Ok.



Use the default `-z3` Lzo compression, because other compressions may cause problems during dump to clients.

Press Ok.

Now it will start loading and later on you have to press enter.



Now let the client boot from PXE and the image will be uploaded.

Just play around with it, loading the images to clients works in a similar way. It's really easy.

Here are the screenshot steps of loading to clients.

```
root@clonezilla: ~
Starting the OCS service for node IP = 10.0.0.4
Starting the OCS service for node IP = 10.0.0.5
Starting the OCS service for node IP = 10.0.0.6
Starting the OCS service for node IP = 10.0.0.7
Starting the OCS service for node IP = 10.0.0.8
Starting the OCS service for node IP = 10.0.0.9
Setting the PXE clients to remote boot linux with label "Clonezilla: save disk h
da as image 2006-08-22-16-img"...
Turn off all MENU DEFAULT...
Make "drbl" as default label in /tftpboot/nbi_img/pxelinux.cfg/default.
The MENU LABEL is "Clonezilla: save disk hda as image 2006-08-22-16-img"
Client jobs are logged in '/var/log/clonezilla-jobs.log',
Copying files to /tftpboot/node_root/drbl_ssi for DRBL SSI... done!
*****
Now set the client machines to boot from PXE or Etherboot, then turn on them (Re
fer to http://drbl.sourceforge.net for more details). Then turn on the client to
make the template image! Note: If the partition you want to save is NTFS filesy
stem, it is recommended to defrag that partiton first.
Note! If you use Etherboot in your client machine, version 5.4.0 or newer is req
uired!!!.
Next time you can run this command directly:
/opt/drbl/sbin/drbl-ocs -q -z0 -l en startdisk save 2006-08-22-16-img "hda"
done!
root@clonezilla:~# /opt/drbl/sbin/drbl-client-switch
```

```
root@clonezilla: ~
Starting the OCS service for node IP = 10.0.0.9
Setting the PXE clients to remote boot linux with label "Clonezilla: save disk h
da as image 2006-08-22-16-img"...
Turn off all MENU DEFAULT...
Make "drbl" as default label in /tftpboot/nbi_img/pxelinux.cfg/default.
The MENU LABEL is "Clonezilla: save disk hda as image 2006-08-22-16-img"
Client jobs are logged in '/var/log/clonezilla-jobs.log',
Copying files to /tftpboot/node_root/drbl_ssi for DRBL SSI... done!
*****
Now set the client machines to boot from PXE or Etherboot, then turn on them (Re
fer to http://drbl.sourceforge.net for more details). Then turn on the client to
make the template image! Note: If the partition you want to save is NTFS filesy
stem, it is recommended to defrag that partiton first.
Note! If you use Etherboot in your client machine, version 5.4.0 or newer is req
uired!!!.
Next time you can run this command directly:
/opt/drbl/sbin/drbl-ocs -q -z0 -l en startdisk save 2006-08-22-16-img "hda"
done!
root@clonezilla:~# /opt/drbl/sbin/drbl-client-switch
Language | »y`¥| è*è`?.
[0]: English
[1]: Chinese Traditional (Big5) - Taiwan | ㄎㄩㄥˋ ㄉㄩㄛˋ (ㄎㄩㄥˋ-ㄩㄛˋ) - ㄎㄩㄛˋ.
[2]: Chinese Traditional (UTF-8, Unicode) - Taiwan | ä,-æ (è-âæ"æ°ç°¼) - ä°çä
[0]
```

